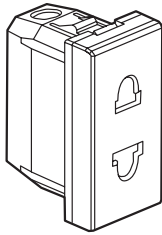
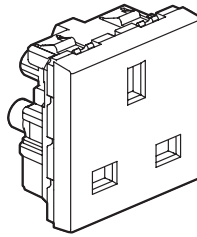


**Mosaic™**  
**International standard power sockets**

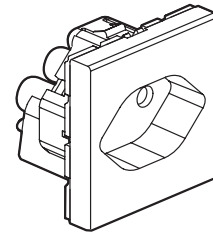
Cat. no(s): 0 775 01/02/03/04/05/6/10/11/12 - 0 772 11



0 775 01



0 775 05



0 775 06

**1. USE**

Socket outlets to different international standards.

**2. RANGE**

	Designation	Cat. No.	No. of modules	Connection method	Characteristics
	Euro/US socket 2 P	0 775 01	1	With screws	15 A - 127 V 16 A - 250 V
	Euro/US socket 2 P + E	0 775 02	2	With screws	15 A - 127 V 16 A - 250 V
	US socket 2 P	0 775 03	1	With screws	15 A - 127 V
	US socket, 2 P + E	0 775 04	2	With screws	15 A - 127 V
	British Standard socket 2 P+E	0 775 05	2	With screws	13 A - 250 V
	Swiss socket, type 13, 2 P+E	0 775 06	2	Automatic terminals	10 A - 250 V
	Italian socket 2 P+E	0 775 10	1	With screws	10 A - 250 V
		0 775 11	1		10/16 A - 250 V
	Italian socket 2 P+E	0 775 12	1	With screws	16 A - 250 V
	German socket 2 P+E	0 772 11	2	Automatic terminals	16 A - 250 V

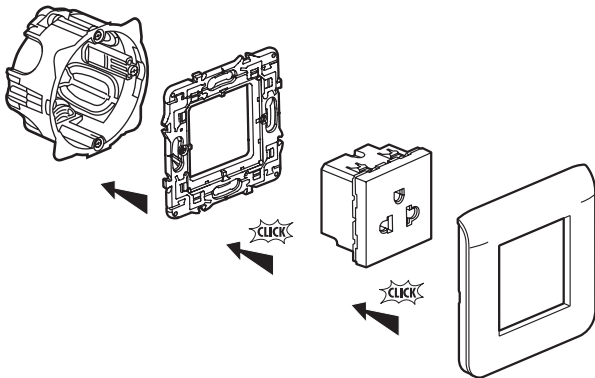
## International standard power sockets

### 3. PREPARATION

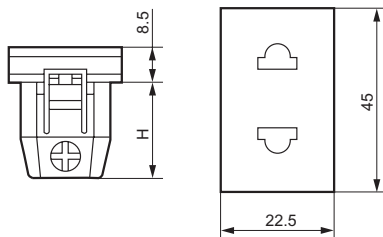
Modular mechanisms using adapter Cat. No. 0 802 99 (2 modules).  
The mechanisms are mounted on thin walls using adapters Cat. No. 0 802 90 (1 module), Cat. No. 0 802 91 (2 modules), Cat. No. 0 802 92 (2 x 1 vertical module).  
The mechanisms can be flush-mounted or surface-mounted.

**Caution:**

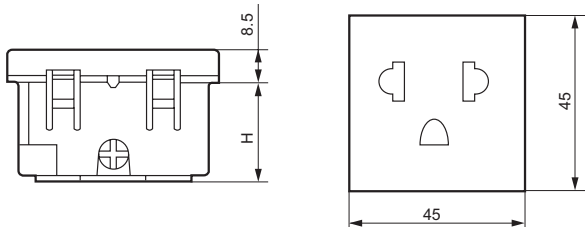
Socket outlet Cat. No. 0 775 12 can not be mounted on 2 and 3-module flush-mounting box support frames. It can be mounted on any other multiple support (flush-mounting boxes, trunking, floor boxes, mini-columns).



### 4. OVERALL DIMENSIONS



Cat. No.	H
0 775 01	23.3
0 775 03	23.3
0 775 10	27.8
0 775 11	27.8
0 775 12	32.5



Cat. No.	H
0 775 02	25.6
0 775 04	25.6
0 775 05	21.5
0 775 06	26.7
0 772 11	32.5

### 5. CONNECTION

	Terminals	Capacity	Stripping	Screwdriver
0 775 01 0 775 02 0 775 03 0 775 04 0 775 05 0 775 10 0 775 11 0 775 12	with screws	2 x 4 mm <sup>2</sup>	9 mm stripping guide	cross-head 2 or 4 mm flat-blade
0 775 06 0 772 11	automatic	2 x 1.5 mm <sup>2</sup> 2 x 2.5 mm <sup>2</sup>	10 mm stripping guide	

### 6. OPERATION

Standard operation by insertion or withdrawal of a plug to normalized standard.

### 7. TECHNICAL CHARACTERISTICS

#### 7.1 Mechanical characteristics

Impact resistance: IK 04  
IP 41 (C15100)

#### 7.2 Material characteristics

Cover plate: Polycarbonate  
Base: Polycarbonate

#### 7.3 Climatic characteristics

Self-extinguishing: 650° C / 30 s  
Storage temperatures: - 10° C to + 70° C  
Operating temperatures: - 5° C to + 50° C

### 8. CLEANING

Surface cleaning with a cloth.  
Do not use: acetone, tar remover, trichloroethylene.

#### 8.1 Resistance to cleaning agents

Resistance to the following agents: Hexane (EN60669-1), Methylated spirits, Soapy water, Diluted ammonia, Diluted pure bleach 10%, Glass cleaning substance, Pre-impregnated wipes.

#### 8.2 Resistance to hospital-type cleaning agents

Resistance to the following agents : Anios, Surfanios, Bactylisine, Diluted hydrogen peroxide (35%).

**Caution:**

A preliminary test should be carried out if other specific cleaning products are to be used.

### 9. CONFORMITY - APPROVALS

Approvals in process:  
Cat. No. 0 775 05: ASTA  
Cat. No. 0 775 06: ASE  
Cat. No. 0 775 10/11: IMQ